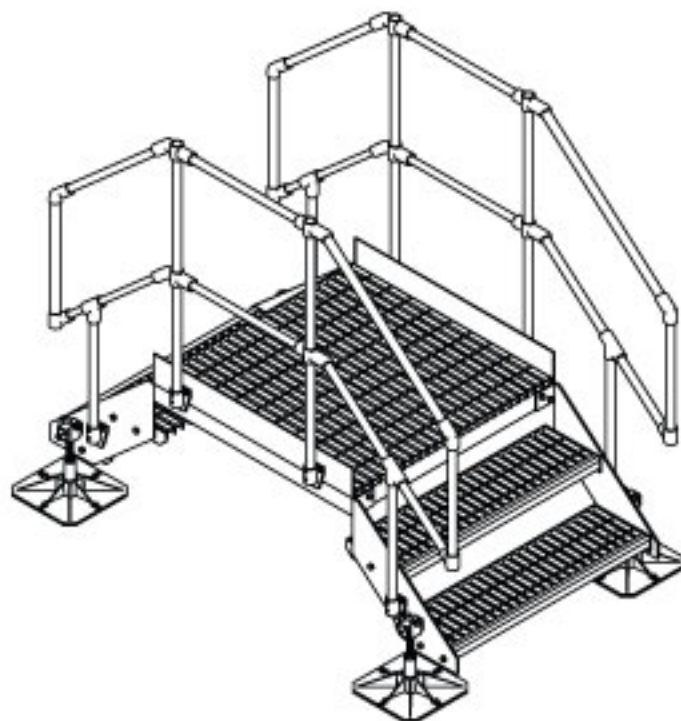




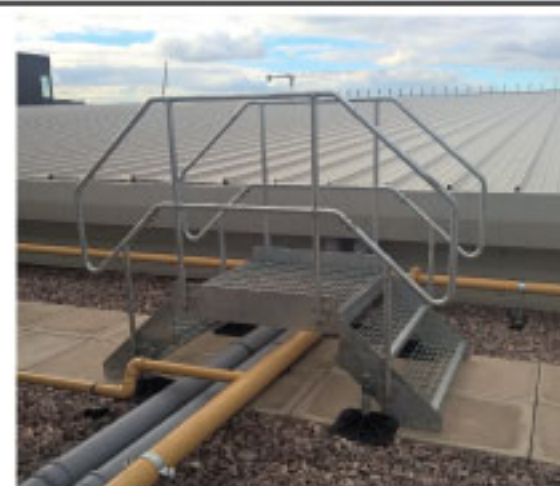
# Flexi Access - Flexi Step-Over & Hop-Over

Safe access solutions designed and manufactured to current British Standards



## Features & Benefits

- Non-penetrative support
- Site survey available
- Fast and simple installation
- Hot dip galvanised frameworks
- Fully working drawings prior to manufacture
- British Standard compliant and meets the Work at Height Regulations Act 2005
- Full AutoCAD drawing support offered
- Load management and wind calculations available
- Full on-site support and surveying services



Standard 2 step - Step-Over shown above (F-SO-2)  
supplied with 1000mm square landing and full handrail & kick plates.



everyday



light



heavy



solar



Pump House  
Glaisdale Drive East  
Nottingham  
NG8 4LY  
Tel: +44(0)115 900 5858  
[www.flexisupportsystems.co.uk](http://www.flexisupportsystems.co.uk)  
[sales@flexisupportsystems.co.uk](mailto:sales@flexisupportsystems.co.uk)

# Flexi Safe Access Standard & Custom Solutions

With the introduction of the work at height regulations back in 2005, the regulations apply to all work at height where there is a risk of a fall liable to cause personal injury. This regulation places duty on employers, the self employed and any person that controls the work of others, e.g. facility managers, building owners/end users etc. Flexi Access solutions are designed to current British Standards; we offer full working drawings, site surveys and all our access range is manufactured in the UK. GRP options are also available upon request. So whether it's a cat ladder, companion way ladder, stairs, ramps, walkways or a combination of all these, flexi access will provide you and your workforce with a safe access solution. We can also offer a custom design service to suit your needs.

## Typical Hop-Over - Ideal to bridge over low level pipe work and cable trays



Part Code - F-HO-1000 Hop-Over shown with optional handrails F-HO-HR sold separately.



Part Code - F-HO-600 Hop-Over shown with optional handrails F-HO-HR sold separately.



Part Code - F-HO-1000-1 Hop-Over with one step shown with optional handrails F-HO-HR sold separately.

Code	Description	Thread Qty	Landing Size mm	Clearance Height mm	Foot Size
F-SO-2	Flexi Step Over 2 up / 2 down	2 up / 2 down	1000mm x 1000mm	560mm	320mm x 320mm
F-SO-3	Flexi Step Over 3 up / 3 down	3 up / 3 down	1000mm x 1000mm	780mm	320mm x 320mm
F-SO-4	Flexi Step Over 4 up / 4 down	4 up / 4 down	1000mm x 1000mm	1000mm	320mm x 320mm
F-HO-600	Flexi Hop Over - 600mm	-	1000mm x 600mm	180mm	320mm x 320mm
F-HO-1000	Flexi Hop Over - 1000mm	-	1000mm x 1000mm	180mm	320mm x 320mm
F-HO-HR	Flexi Hand Rail for Hop Over (1100mm high)	-	-	-	-
F-HO-600-1	Flexi Hop Over - 600mm Step Over 1 up 1 down	1 up / 1 down	1000mm x 600mm	410mm	320mm x 320mm
F-HO-1000-1	Flexi Hop Over - 1000mm Step Over 1 up 1 down	1 up / 1 down	1000mm x 1000mm	410mm	320mm x 320mm



## Specification Extract

Standard/Custom Access to be supplied by Pump House, fully adjustable and hot dipped galvanised solutions and supported on 320mm square UV stabilised 100% polypropylene feet. Tel: +44(0)115 900 5858

## Application

Step-Over to bridge over ducts, pipes and electrical containment; custom solutions to access maintenance doors to AHU's, chillers or other rooftop services, ramped access solutions where wheelbarrow/sack barrows are used and straight-forward elevated access solutions. Cat ladders and companion way ladder also available.

## Material Specification

- Foot - 320mm square UV stabilised 100% polypropylene
- Mat - 320mm feet only, 100% natural rubber, (mat is adhered to the foot)
- Legs - Step-Over 48mm dia. 3mm steel tube with M24 stud adjuster. Hop-Over 40x 40 x 2mm SHS
- Handrails - Step-Over 33.7mm diameter mild steel. Hop-Over 33mm dia. RHS.
- Treads/Flooring - 25 x 3mm open grid flooring. (41/100 bearing bars) and designed to 7.5kN/m<sup>2</sup> loading BS:4592 part 1
- Finish - Hot dip galvanised steelwork BS EN 10219-1:2006. Galvanising: BS EN ISO 1461:2009. Salt mist testing: BS EN 60068-2-52

## Our Service Offers You

- Quotation on request
- Full AutoCAD drawings support
- Site support and site surveys
- Load management calculations
- Over 20 years experience in flat roof design and providing support systems to building services
- Fast delivery
- Experienced in-house technical staff