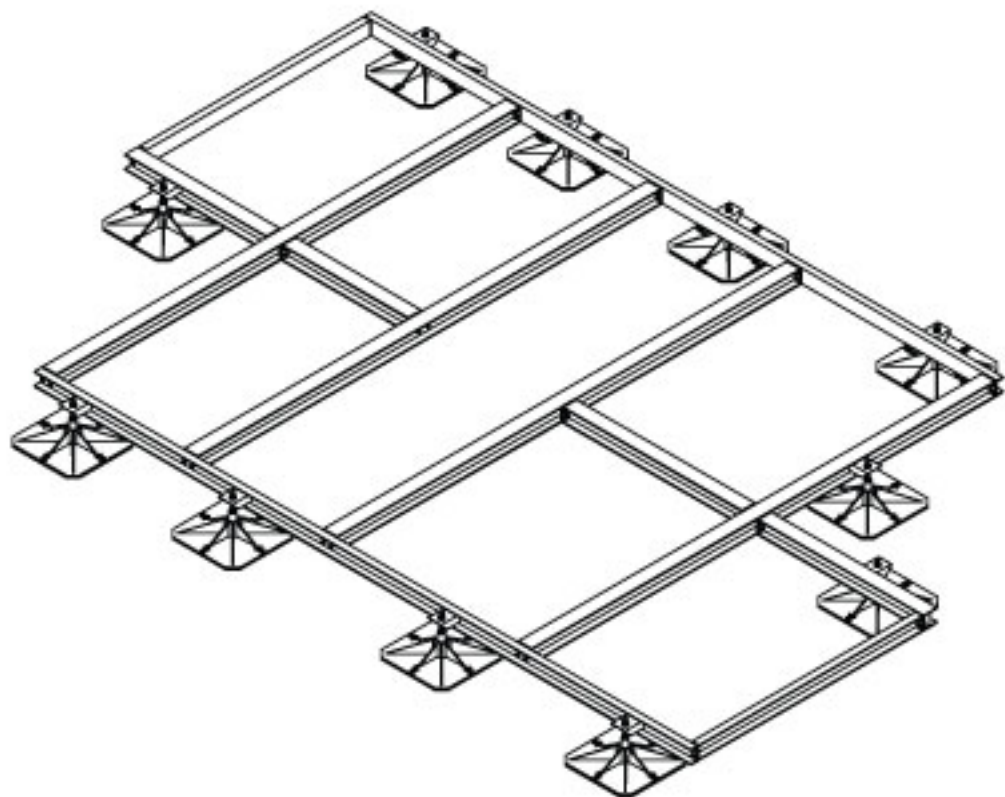
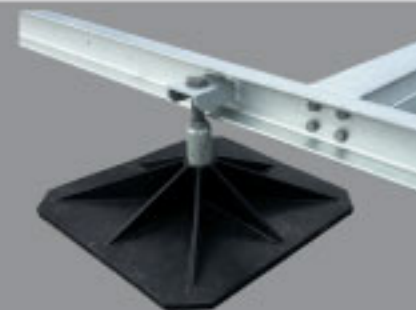




heavy

Flexi Heavy - Flexi Custom Frames

Custom robust frameworks for the support of complex and heavy building services.



Features & Benefits

- Non-penetrative support
- Flexible design to accommodate late design changes
- Fast and simple installation
- Hot dip galvanised frameworks
- Fully adjustable to roof falls
- Safe load management designed
- Full AutoCAD drawing support
- Load management and wind calculations available
- Full on-site support and surveying services



Pump House
 Glaisdale Drive East
 Nottingham
 NG8 4LY
 Tel: +44(0)115 900 5858
www.flexisupportsystems.co.uk
sales@flexisupportsystems.co.uk



everyday



light



solar



access



Flexi Custom Frames for Building Services

These custom solutions are frequently manufactured from 100 x 50mm parallel flange channel and/or 100 x 100mm HEB (European beam) and supported off fully adjustable leg assemblies utilising our larger 500 x 500mm polypropylene feet incorporating anti-vibration rubber mats adhered to the underside. However larger steel sections are available dependant on project requirements and/or the mass or size of the services being supported. All frameworks are finished hot dip galvanised and supplied with all fixings. We will provide the design team with an AutoCAD drawing proposal together with load calculations prior to manufacture.

Typical support layout



Information Required	AHU Requirements	Chiller Requirements	Packaged Plantroom Requirements
1	Sectional quantity	AVM quantity & point loads	Sectional quantity
2	Sectional dimensions	AVM dimensional locations	Sectional dimensions
3	Sectional weight	Total weight (operating mass)	Total weight (operating mass)
4	Overall dimensions & weight	Overall dimensions	Overall dimensions



Specification Extract

Large chillers/AHU's/packaged plantrooms will be supported on Pump House fully adjustable and hot dip galvanised flexi heavy custom frame utilising 500 x 500mm polypropylene feet. Tel: +44(0)115 900 5858

Application

Suitable for heavy chillers, packaged plantrooms, or complex shaped building services typically air handling units. Steelwork comes with all necessary fixings and the correct amount of leg assemblies/feet. These are manufactured within the UK offering a very fast lead time.

Material Specification

- Feet - 500 x 500mm UV stabilised 90% polypropylene + 10% GRP
- Mat - 100% natural rubber, (mat is adhered to the foot)
- Legs - Custom manufactured to suit most heights and welded to frames. Supplied with an M24 adjuster stud for levelling.
- Frame - dependant on load/span
- Finish - Hot dip galvanised steelwork BS EN 10219-1:2006. Galvanising: BS EN ISO 1461:2009. Salt Mist Testing: BS EN IEC 60068-2-52:2018.

Our Service Offers You

- Quotations on request
- Full AutoCAD drawings support
- Site support and site surveys
- Load management calculations
- Over 20 years experience in flat roof design and providing support systems to building services
- Fast delivery
- Experienced in-house technical staff