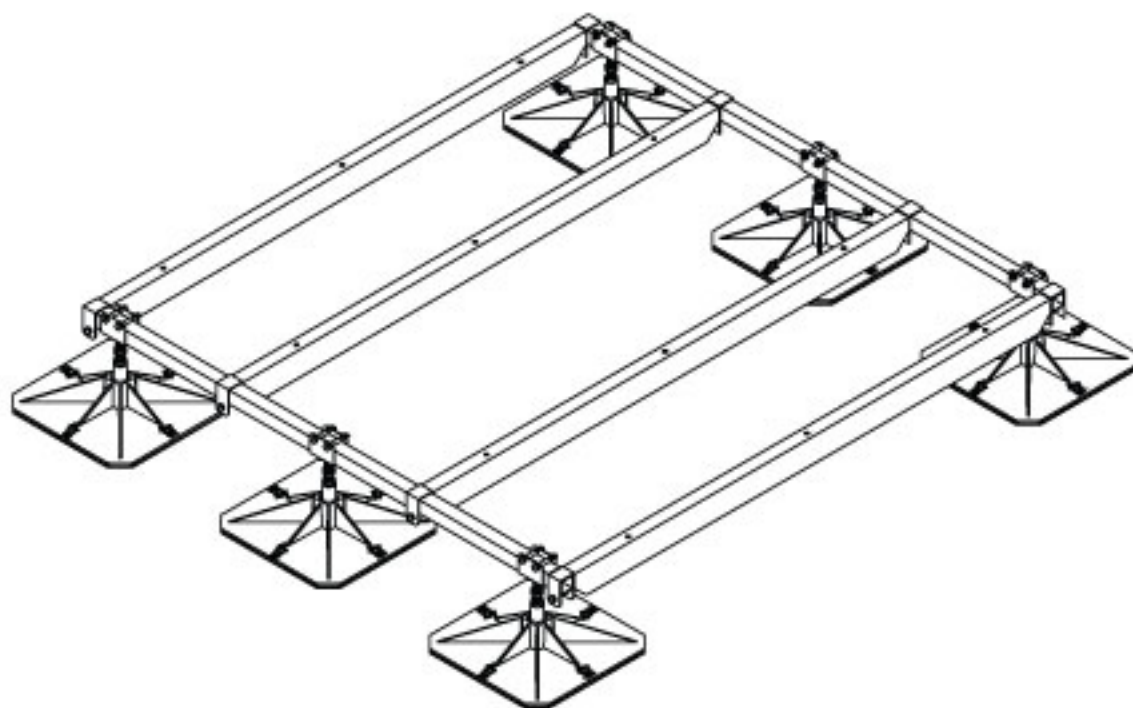
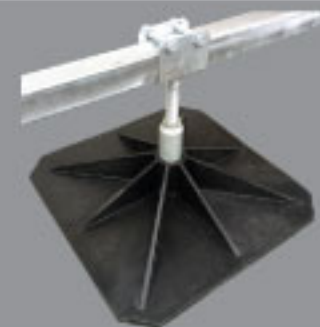




heavy

Flexi Heavy - Flexi Frames

Modular robust frames for large air handling units.



Features & Benefits

- Non-penetrative support
- Flexible design to accommodate late design changes
- Fast and simple installation
- Hot dip galvanised frameworks
- No time consuming clamping kits required, cross bars are industry standard strut fix
- Cross bars supplied with holes for second fix strut (by others)
- Full AutoCAD drawing support
- Load management and wind calculations available
- Full on-site support and surveying services



everyday



light



solar



access



Glaisdale Drive East
Nottingham
NG8 4LY
Tel: +44(0)115 900 5858
www.flexisupportsystems.co.uk
sales@flexisupportsystems.co.uk

Flexi Heavy Duty Modular Frameworks

These robust free standing modular frameworks are supplied with fully adjustable leg assemblies in either our 320 x 320mm or 500 x 500mm polypropylene feet incorporating anti-vibration rubber mats adhered to the underside. Robust 50 x 50 mm square hollow section end bars are 2.5mm thick and are supplied with either 50 x 50mm or 100 x 50mm cross bars. With a variety of sizes available for both our end bars and cross bars, a suitable framework can be designed to suit many applications where a strong support is key. For lighter weight frames please look at the 'Flexi-Light' range.

Typical support layout



Other leg assembly variations for this system are available dependant upon application



| Code | SHS Section | 1000mm | 1500mm | 2000mm | 2500mm | 3000mm | 3500mm |
|-----------|-------------|----------|----------|----------|----------|----------|----------|
| END BAR | 50x50x2.5 | PHF-005A | PHF-005B | PHF-005C | - | PHF-005D | - |
| CROSS BAR | 50x50x3.0 | - | PHF-016 | - | - | - | - |
| CROSS BAR | 100x50x3.2 | - | - | PHF-016A | PHF-016B | PHF-016C | PHF-016D |



Specification Extract

External building services will be supported on Pump House fully adjustable and hot dip galvanised flexi heavy duty frameworks utilising utilising 320 or 500mm sq. polypropylene feet Tel: +44(0)115 900 5858

Application

Suitable for heavier building services typically larger air handling units, chillers and air cooled condensers. Our unique 'drop on' cross bars offer a faster alternative when erecting the framework compared with some slide on systems.

Material Specification

- Feet - 320 or 500mm square UV stabilised 90% polypropylene, 10% GRP
- Mat - 100% natural rubber, (mat is adhered to the foot)
- Legs - 48mm dia. 3mm steel tube with M24 stud adjuster and 4mm thick U-clevis to top
- End bars - 50x50x2.5mm SHS (square hollow section)
- Cross bars - 50x50x3mm & 100x50x3mm (square / rectangular hollow section)
- Finish - Hot dip galvanised steelwork BS EN 10219-1:2006. Galvanising: BS EN ISO 1461:2009. Salt Mist Testing: BS EN IEC 60068-2-52:2018.

Our Service Offers You

- Quotation on request
- Full AutoCAD drawings support
- Site support and site surveys
- Load management calculations
- Over 20 years experience in flat roof design and providing support systems to building services
- Fast delivery
- Experienced in-house technical staff